

FROM THE PRINCIPAL'S DESK

Dear Parents and Carers,

Welcome back to Term 2. I hope you all enjoyed the holiday break with your family and friends.

Today we welcome a team of teachers from Kunyung Primary School who are visiting our Foundation and Year 4 classes to see firsthand what learning looks like in our high performing school.

NAPLAN 2024 Preliminary Results

This morning the VCAA released the NAPLAN 2024 preliminary results to schools. This report provides us with an opportunity to see how our students have performed in this year's tests, except for Year 3 Writing which is marked individually by an assessor. I am extremely pleased with our results as we have made growth in all areas of the NAPLAN tests. Parents will have access to their NAPLAN 2024 Student Reports from Monday 15th July.

ANZAC Day ceremony

Yesterday afternoon, our School Captains Lucy C and Alex M represented our school at the Mt Eliza ANZAC Day ceremony by laying a wreath to honour those men and women who have served or are serving in the Australian Defence Forces.

Thank you to our School Captains Lucy and Alex who did an amazing job and represented our school proudly.

Major Capital Works – Main Building & Student Toilet Block

We are still at the Schematic Design phase of the Major Capital Works project. Once we have completed this phase, I will display the final design in the school foyer for the community to view.

The student toilet block refurbishment is still underway. The new floors have been poured, new plaster has been installed and the tilers have started tiling the walls. Once this work is done, the plumbing will take place and the partition walls will be installed.

The project manager is confident works will be completed by the end of term.



2025 Foundation Tours

We now take 2025 Foundation Tours weekly. Our School Captains and Student Representative Captains accompany us on the tours giving a child's perspective on the benefits of being a student at Mount Eliza North Primary School.

I really enjoy taking prospective parents on a tour of our beautiful school, highlighting our outstanding academic achievements, excellent facilities, and extensive specialist programs.

A reminder, we are now taking Foundation enrolments for siblings, with forms available from the office.

Curriculum Day Friday 3rd May

A reminder that Friday 3rd May is a student free Curriculum Day. Teachers will take the opportunity to visit other schools in our network with a focus on learning goals, differentiation in teaching and learning, feedback, and resources used in classrooms to support student learning.

Report Writing Day Monday 3rd June

The Department of Education has granted all primary schools a report writing day in Term 2. On this day, staff will be reviewing data and assessment tasks, to write Semester 1 Student Reports. Student Reports will be distributed on Friday 21st June and Student Led Conferences will be undertaken in the last week of term.

Kind regards,

Julie O'Brien
Principal

Keep an eye on the school calendar as dates and events have been added!

FROM THE ASSISTANT PRINCIPAL...CURRICULUM/PYP

Dear Parents and Carers,

Welcome back to term 2. I hope you had an great break. As always term 2 will be a busy, but enjoyable term.

STUDENT LED CONFERENCES

At the end of term 2 we are going to hold **Student Led Conferences**.

Traditionally, we have held a parent-teacher conference, however as part of our ongoing work around Student Agency we believe the opportunity for these conferences to be led by students will enhance their sense of ownership and agency in their learning. We will be supporting students to prepare for these conferences and will also share further information about this with our school community.

Essentially, students will discuss their learning with reference to specific pieces of work. They may speak about their strengths and challenges and also about their future learning goals. The student's class teacher will be there to assist in facilitating the conversation and to provide support. Families will be encouraged to ask questions and be part of the conference process.

The conferences will run for approximately 10 minutes to ensure that each student has the opportunity to share their learning.

On occasion there are conversations that may need to take place, where it is preferred, that students are not present. In these instances, it will be best to arrange an alternate time for these discussions. Usually, if there are sensitive topics that require discussion these will have already taken place prior to the final week of term.

SCHOOL VISITS

As a network of schools, we have a strong focus on improvement and working together to ensure high quality education for all students. Principals and Assistant Principals in the network meet regularly and visit each other's schools to experience the environment and learning that is taking place. It is a valuable opportunity to be part of. As a result, our Curriculum Day on Friday 3rd May will be focused on staff at Mount Eliza North Primary School visiting schools in our network in their year level teams. I believe that it will be a fabulous professional learning opportunity for staff.

As well as visiting other schools we have also extended an invite for staff to visit our school and see the great things that happen in our learning community. Throughout the term we will have visitors from other schools joining us and we look forward to the opportunity to share the wonderful work we are doing as a school.

PIVOT SURVEY

As part of our Annual Implementation Plan, we have a strong focus on developing learner agency amongst staff and students. As part of this we have decided to use the PIVOT survey as a way of gathering feedback from students. Student in years 3-6 will complete a short survey providing feedback about their learning experiences. Teachers are able to look at the data from this survey and set goals with their students about areas they may wish to develop further. Students will also complete the Attitude to School Survey this term which is a statewide survey that all schools complete from years 4-6.

Yours in Learning,

Caroline Chilianis

Assistant Principal



YEAR 6—7 TRANSITION 2024-5

It is a requirement for primary schools to ensure every child under their care has a place reserved in a secondary school. Recently Year 6 families will have received a Year 6 to 7 Transition Pack and Transition Form. Please ensure you have filled this form out in full, making sure to provide any supporting documentation such as acceptance letters to any independent/ private college.

If you require to update your permanent residential address please contact the school to ask about supporting documents necessary to achieve this (due to school zonings).

Transition Forms are due by Friday 10th May 2024.

FROM THE ASSISTANT PRINCIPAL ... WELLBEING

INCLUSION OUTREACH COACH (IOC)

The Inclusion Outreach Coaching (IOC) initiative is being delivered by the Department of Education as part of the Disability Inclusion reform agenda. The IOC initiative supports schools to implement inclusive education practices with advice and expertise from Inclusion Outreach Coaches. Inclusion Outreach Coaches (IOCs) are based in specialist schools and provide strategically coordinated capability-building opportunities to partner schools. Their focus is on building the capability of school workforces, including school leaders, middle leaders, teachers and other staff. IOCs have expertise in inclusive practices and problem-solving, a deep knowledge of teaching and learning, and the skills to coach and support others.

The school applied for a Partnership with IOC service to further support the work we have already done in the inclusive practices space. Catherine Crea will work with the school for Term 2 and then a different IOC will work with us in Term 3. I look forward to updating you on the work we achieve over the next 2 terms.

RESILIENCE, RIGHTS & RESPECTFUL RELATIONSHIPS

Kelly Nash has commenced her Body Education sessions to support our Resilience, Rights and Respectful Relationships program. An Information session for the parents of Grade 3 – 6 students was conducted via Zoom on the 17th of April with the recording shared to families who were unable to attend the live session. Families and students of the Junior School were invited to attend a family session on Wednesday 24th April. This was a valuable session for the youngest members of our school community who were able to attend the evening.

DEVELOPMENTAL PLAY SHED

The Developmental Play Shed opening has been delayed due to a lack of equipment and toys for borrowing. We are looking for donations to add to the limited toys we already have. Some of the items that students would like to play with include dolls, sandpit toys, sports equipment, and games. If you are able to assist by donating any of these items, please let me know.

MOTHERS DAY STALL

The PFA will be holding a Mother's Day stall in the multipurpose room on Thursday 9th May from 9.00 – 11.00am. Children will attend with their class where they will have the opportunity to purchase the special person in their life a Mother's Day gift. The Gifts will range from \$5-\$10.

Parents are asked to send money with students on Thursday 9th May. Volunteers are needed for the day, so if you can assist in set up, sales or pack up, please register via Compass.

Until next time...

Lou Atkinson

Assistant Principal



CANTEEN & LUNCH INFORMATION



CANTEEN CLOSED MONDAY 29TH APRIL. WE APOLOGISE FOR ANY INCONVENIENCE. THE CANTEEN WILL RE-OPEN ON TUESDAY 30TH APRIL.



During the year we have several instances where students have no lunch. This could be because of a forgotten lunch box, unconfirmed lunch order or the resident ravens have eaten lunch left outside unattended.

Whatever the reason we will endeavor to contact you to organize a replacement lunch (late lunch orders can be placed via the canteen Flexischool app if required).

In the event we are unable to make contact with either parent/ carer we would like to offer students a simple sandwich so not to go hungry. (vegemite)

A small charge of \$3.20 will be added to your school account for payment.

FROM THE PE HALL— SPORT WITH MRS SEABURGH

Welcome back to PE and Sport in Term 2. Our sports calendar is already *full* and we have lots of events to look forward to!

Coming up in Sport this term...

CROSS COUNTRY

MENPS Cross Country

Our MENPS house cross country is on Friday 10th May.

Foundation - Year 2: Junior School Cross Country

Approx. 600m

Friday 10th May

This will take place from 2.30 - 3.30pm.

Year 3 - 6: House Cross Country

2 - 3km (depending on age)

This will take place from 11.30 - 1.30pm. Students will be running out of the school and through Lorikeet Reserve and finishing on the school oval.

Students are welcome to practice our cross country course with an adult. Please see a map of the event. The blue dot is the start which is in the middle of our school oval.

DISTRICT Cross Country

Those students in Year 4 -6 who are selected to represent the school at the District Cross Country will compete at Peninsula Grammar on Monday 20th May between 12 and 2pm.

RUNNING CLUB

Each week students in Year 3-6 will be participating in cross country training at the beginning of their PE lesson. I have also encouraged students to come along to running club to be fit and ready for our MENPS cross country. If the weather is wet I encourage students to bring spare socks and runners, where possible. I am still looking for parent volunteers to assist with running club. If you have any ideas and are interested in helping promote runners club at MENPS, please contact me:

angela.seaburgh@education.vic.gov.au

Running Club Dates for May - start time is 8.30am

INTERSCHOOL SPORT

Weekly Afternoon Interschool Sport

Our Year 6 students will be participating in weekly interschool sports. They have chosen to play AFL, Soccer, Netball or Tee Ball. Sport training takes place on Friday afternoons. At this point we have an afternoon of sport booked with Mt Eliza PS on Friday 17th May. We are waiting on confirmation for other schools to play.

We are also looking for any parents who might be interested in assisting with coaching our teams. We practice on Fridays 2.30-3.30.

Winter Lightning Premiership

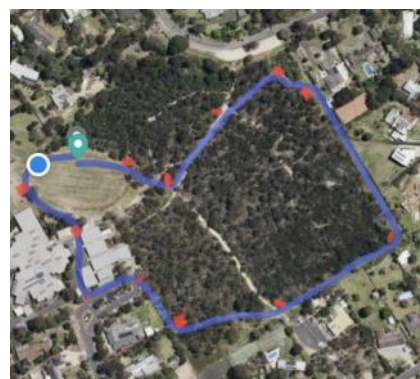
On Wednesday 19th June Year 6 students will be participating in the Mount Eliza District Lightning Premierships. Students will play a Round Robin style competition against local schools with their weekly afternoon sports teams. Times and venues will be released in the coming weeks.

For this day to run successfully we require parents with an understanding of a sport to assist with teams on the day of our lightning premiership. This is especially necessary for netball where we have 3 teams. Each team requires a parent/ teacher to manage the girls on the day and possibly umpire. If you would like to assist please email me on

angela.seaburgh@education.vic.gov.au

Thank you

Ange Seaborough



DATES
Friday 26th April
Wednesday 1st May (due to Curriculum Day)
Tuesday 7th May (due to cross country Friday)
Friday 17th May
Friday 24th May
Friday 31st May
Friday 7th June
Friday 14th June
Friday 21st June

SCHOOL SPORT VICTORIA STATE TRIALS

This year we had 4 students try out for Victorian State Teams. Within School Sport Victoria individual students have the opportunity (if competing at a high level) to try out for State teams in their chosen sports. This year we had Tyler and Toby trying out for Basketball, Tom for AFL and Shiva for Cricket and Hockey. These students attended trials with approximately 30-70 other students from our region. They were required to play games and skills of their chosen sport. Selectors watch each student and then select students to go through to the next level.

Congratulations to Tom (AFL) and Tyler (Basketball) who were successful in being selected from the Southern Metro Region and will participate in the next round of trials which include country Victoria schools. Good luck!



DISTRICT TENNIS TRIALS



Last Wednesday Callum from Year 6, participated in a District Tennis tournament. He played games against other schools in our district. He did an amazing job and finished the tournament in 3rd place. Well Done, Callum.

Angela Seaborough
PE/ Sport Teacher

Providing Value to Families

Issue 3 Out Now!

Includes a
\$5
credit!



ISSUE 3 2024

SCHOLASTIC Book Club

Value Packed **EARN AND SPEND CREDITS!** See back page for more

001 NEW! Mini Shake Shop
Make Bubble Tea and other sweet treat replicas. 32-pp book, air dry clay, accessories and more.
AGES 7+ \$29.99 **\$26.00**

002 NEW! Karen's Sleepover
Karen is super excited about her first sleepover.
144 pp. AGES 7+ \$16.00 **SAVE 41% \$10**

003 NEW! Teacher's Pet
The twins...

DOG MAN: The Scurst Struggle

THE BAD GUY

BABY-SITTERS LITTLE SISTER

FRANCINE PASCAL'S SWEET VALLEY TWINS

ORDERS DUE BACK BY:

SCHOLASTIC **Book Club**

Book Club rewards your School!

Every purchase you make earns your child's school 15% of your order value in Scholastic Rewards that can be used to purchase valuable educational resources that benefit your child.



Families order from Book Club.



The school earns Scholastic Rewards.



The school redeems Scholastic Rewards for additional resources

SCHOLASTIC  **Book Club**



CLICK TO ENLARGE



ALIA and Library and Information Australia

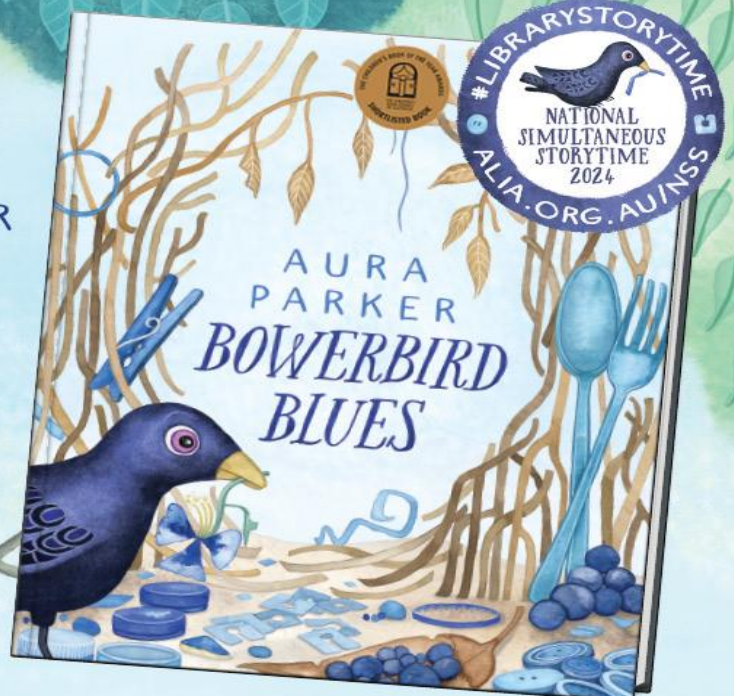
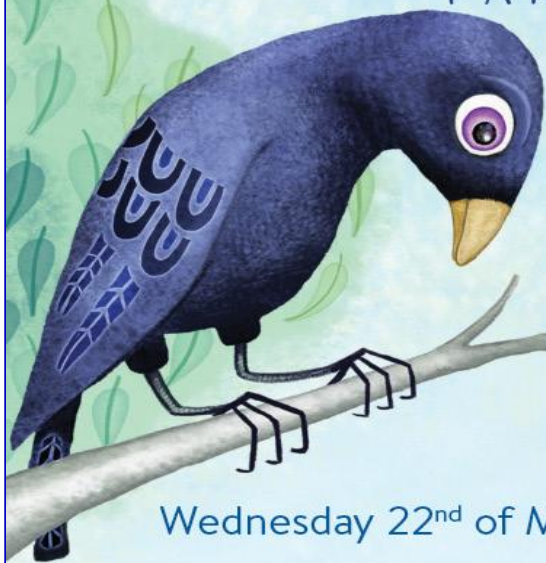
SCHOLASTIC

LIANZA

NATIONAL SIMULTANEOUS STORYTIME

REGISTER FOR FREE AT: WWW.ALIA.ORG.AU/NSS

BOWERBIRD BLUES AURA PARKER



Wednesday 22nd of May at 12:00pm AEST / 2:00pm NZST

Find me in Issue 3!

SCHOLASTIC **Book Club**

FOUNDATION (PREP) ENROLMENTS AND SIBLING ENROLMENTS OPEN NOW!

Do you have a child starting Foundation in the 2025 School Year? Not sure where to start? Fret no further! Mount Eliza North is committed to supporting our families through the Foundation Enrolment process.

Please contact our friendly office staff to find out further details regarding the Enrolment Timeline, and to obtain an Enrolment or Application Form.

We look forward to hearing from you!

Mount Eliza North Administration Team

FROM THE NURSES OFFICE—SICKBAY NEWS

A request from the First Aid Officer regarding student medications administered at school:

For any student medication instructions or enquiries regarding starting/ ceasing a regular medication at school, dose changes and/ or administration of temporary medications (eg. antibiotics), please contact the First Aid Officer, Kate Lyell, in addition to the classroom teacher.

Kate is contactable between 10.00AM—3.30PM on (03) 9787 6611; or please email the school marked to the nurse's attention. Medication Authority forms are available on the school website or from the front office.

In addition, if you have a child who has been diagnosed with Whooping Cough, Covid-19, Gastroenteritis, Chicken Pox or any other infectious disease, please contact the school to report this so the nurse can take the necessary steps to keep everyone happy and healthy.

Thank you,
Kate Lyell
School Nurse



School Pick up, Parking, and Road Safety



Parents are asked to be considerate of parking at the school and the congestion which can be caused by arriving at the school early in the afternoon before school dismisses for the day.

There is a 'Kiss N Go' sign at the top of the carpark to indicate to all vehicles the nature of the drop-off/ pick-up area.

For safety reasons, parents are reminded not to park near the reserve at the top of the school during drop-off and pick-up times.

We also extend a friendly reminder to all parents, carers and students alike, to be mindful when walking through the pick-up/ drop-off area. It is important to note that pedestrians, and those riding their bike or scooter to school, must stick to the paths to avoid any dangerous situations such as students walking behind or in front of moving vehicles on the road. The safety of all students, families, and staff, is the number one priority at Mount Eliza North Primary School.

We thank you all for your cooperation and consideration in this matter.



HORIZONS

Lunch time program

Horizons is a proactive approach to support student engagement and wellbeing, social skills and a sense of community and belonging. This program ensures we have alternatives for students who would like to choose an activity other than outside play for the whole of lunch time or are unsure of what to play.

This term we have some varied and wonderful activities organised, lead and run by Year 6's and teachers. Some of which are: Karaoke, Playdough, LOTE Club, Writing Club, Pokémon Card Trading, Chess Club, Footy Elimination, Rubick's Cube Club and many craft activities. We also have some amazing parent volunteers, running activities such as Boxing-style fitness, Waterbug Investigation and Delightful Crafts!

When:

4 weeks in Term 2: weeks 3-6

4 weeks in Term 3: weeks 3-6

Horizons operates between 1.30 and 2.00 pm (If there is a wet day timetable then Horizons will be cancelled)

Ask your child which group they have signed up for and please encourage them to continue attending for all 4 weeks! Any students who missed out this round, will be considered for Term 3 Horizons.

If you have any questions about Horizons, please email Miss Wardley:

Amanda.Wardley@education.vic.gov.au



AN INVITATION TO OUR BOOK FAIR!

Where: MENPS Multi Purpose Room

6 Moseley Drive

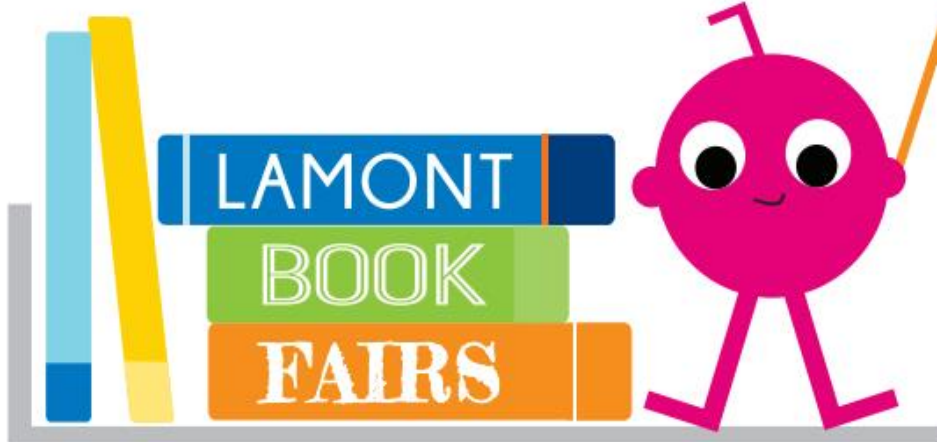
Date: 13th-17th May 2024

Time: 8:30 - 9:00 / 3:00 - 4:00



Don't miss out!

Every purchase
supports our school!



www.lamontbooks.com.au

HAVE YOU...
MOVED RECENTLY?
CHANGED PHONE NUMBERS?
CHANGED EMPLOYMENT?

**DON'T FORGET TO CONTACT OUR SCHOOL OFFICE
TO KEEP YOUR DETAILS UP TO DATE**

SECOND HAND UNIFORM DONATIONS

Mount Eliza North Primary appreciate receiving second hand uniforms for donations.

However, could you please assure that all items are in good, wearable condition and have been fully laundered.

Thank you

2024 STAFFING

Junior School

Foundation: Casey Buddle (M – Th) Jane White (F), Melissa Hockey, Jodie Suffolk

Year 1: Michelle Owen, Molly Ash, Peter Van Grunsven

Year 2: Joanne McEvoy, Amanda Wardley, Anna Hendrey

Middle School

Year 3: Angela Stoller, Beth David/ Anne Keays, Melissa Clayton

Year 4: Leanne Evenden, Annette Wetherill, Shaylen Dewhurst, Russell Gilchrist

Senior School

Year 5: Renee Derriman, Alice Peddle, Lizzie Andersen (M- T) Lauren Conacher (W – F)

Year 6: Patricia Gibson, Bonnie Gillan, Carly Paul

Specialist staff

Library: Lauren McIlroy

Languages: Kailani Johnson

PE: Ange Seaburgh

Music: Melina Garbers

Art: Sophie Vuat

STEM (Science, Technology, Engineering & Maths): Kym Bradley

Literacy Intervention: Jane White

ATTENDANCE INFORMATION FOR PARENTS & GUARDIANS

Going to school every day is the single most important part of your child's education. Students learn new things at school every day. We want our students to get a great education, and the building blocks for a great education begin with students coming to school each and every day. There is no safe number of days for missing school, each day a student misses puts them behind, and affects their educational outcomes.

SCHOOL SUPPORT

The school has a wellbeing team who can support you and your child to ensure they attend school on time.

NOTIFYING THE SCHOOL ABSENCE

School attendance is mandated under the *Education Training and Reform Act 2006*. It is the responsibility of parents/ carers to ensure their child regularly attends school.

- Parents must contact the school to provide a reason for absence prior to or on the morning of the day of absences. **This can be done via Compass and needs to be done prior to 9.30am**
- The school will contact you at 9.30am via SMS through Compass Education if a student's absence is unexplained. Parents will be expected to update Compass with explanation.
- If your child is late (after 9.05am), they must be signed in at the office, by a parent/guardian
- Children who are to be collected early must be signed out at the office and the administration officer will call to the class

ACCEPTABLE REASONS FOR AN ABSENCE

The main reasons for absence are:

- Medical and dental appointments, where out of hours appointments are not possible or appropriate
- Bereavement or attendance at the funeral of a relative or friend of the student, including a student required to attend Sorry Business
- School refusal, if a plan is in place with the parent to address causes and support the student's return to school
- Cultural observance if the parent/carer notifies the school in advance

FAMILY HOLIDAYS

It's vital that holidays are planned during school holidays and not during the term. Any holidays during school time must be approved by the Principal in advance. Please put all holiday requests of 5 days or more in writing to the Principal and email to mount.eliza.north.ps@education.vic.gov.au

Once approval has been given, the classroom teacher will send home a Learning Plan for your child.

WHAT ARE UEXPLAINED OR UNAPPROVED ABSENCES?

The Principal will approve or not approve any absence on a case-by-case basis.

The teacher will record an absence as '**unexplained**' if no explanation about the absence is given to the school.

Unacceptable reasons for allowing a child to stay home from school, include: completing adult duties such as child-minding and interpreting, keeping an adult company, tutoring, visiting friends and relatives, holidays, sports lessons, shopping trips and birthdays.

A letter informing the Principal of any ongoing absence is required. eg. Elite Sporting programs, etc.

ONGOING ATTENDANCE CONCERN

Where absences are of concern due to their nature or frequency, or where a student has been absent for more than five days, we will request a Student Support Group Meeting (SSG) to provide support and devise an action plan. In extreme cases of absenteeism a referral will be made to the Attendance Officer.

DEPARTMENT GUIDELINES

For more information and resources relating to attendance please visit:

<https://www2.education.vic.gov.au/pal/attendance/guidance>

REMEMBER, EVERY DAY COUNTS.

IF YOUR CHILD MUST MISS SCHOOL, PLEASE ADVISE THE SCHOOL AS EARLY AS POSSIBLE VIA EMAIL.



UNIFORMS BY DESIGN – UNIFORM SHOP

OPENING TIMES: MONDAY 8.30am – 10.00am and WEDNESDAY 3.15pm – 4.15pm

PRICE LIST AS OF 11 MARCH 2024

The on-site Uniform Shop trading hours are as listed above. For convenience to parents, completed orders can be submitted at the MENPS School Office OR emailed to Lea Miller (lea.miller311@gmail.com). Purchased items will be delivered to your child's classroom once processed. If the sizes purchased are unsuitable, exchanges can be made during Uniform Shop opening times.

Cash payment or credit card details should be included when submitting your order. Please call Lea Miller on 0411 462 987 if you prefer not to provide card details on the form.

CARD NO: _____ Expiry Date: _____ / _____ CCV _____

CARD HOLDER'S NAME: _____ PHONE NO: _____

CHILD'S NAME: _____ CLASS _____

Item	Price	Size							Sml, Med & Lge	Total	
		4	6	8	10	12	14	16			
TOPS											
Red Short Sleeve Polo Shirt – Navy Logo	\$26.00								*	\$	
Red Long Sleeve Polo Shirt – Navy Logo	\$28.00								*	\$	
Navy Windcheater – White Logo	\$29.00								*	\$	
Navy Stud Jacket – White Logo	\$40.00								*	\$	
Sport T-Shirt – Red, Blue, Green, Gold	\$15.00							NA	*	\$	
BOTTOMS											
Navy Pants for girls	\$28.00								*	\$	
Navy Track Pants Straight Leg-Zip Pocket	\$24.00								*	\$	
Navy Track Pants – Elastic Cuffs	\$25.00								*	\$	
Navy Rugby Shorts - White Logo	\$20.00								*	\$	
Navy Skorts	\$21.00								*	\$	
DRESSES											
Winter Pinafore	\$53.00								*	\$	
Winter Skirt only	\$49.00								*	\$	
Summer Dress	\$46.00								*	\$	
MISC											
Navy Rain Coat (Circle size)	\$26.00		6		8		10		12	14	\$
Navy Fleece Scarves	\$8.00										\$
Navy Gloves	\$6.00										\$
Navy Art Smock (Circle size)	\$17.00						6 – 9 yrs		9 – 12yrs	\$	
Red Hat – with logo (Circle size)	\$12.00		S-55cm		M – 57cm		L - 59cm		XL –61cm	\$	
Knit Beanie (Navy, red and white) NOT AVAILABLE CURRENTLY	\$8.00		One size fits most								\$
BAGS											
Navy Reader Satchel	\$11.00										\$
Navy Library Bag	\$11.00										\$
Navy School Bag with logo	\$47.00										\$
									TOTAL ORDER =	\$	

*** ADULT SMALL, MEDIUM AND LARGE CAN BE ORDERED ON REQUEST**

PRICES SUBJECT TO CHANGE WITHOUT NOTICE – ALL PRICES INCLUDE GST.

Money Raised with our Ritchies Community Benefit Payment: \$56.25
Well done everyone!

WIN \$5,000

FOR YOUR NOMINATED CLUB, SCHOOL OR CHARITY

**REGISTERED MEMBERS WHO SHOP
AT RITCHIES GO INTO THE DRAW
TO WIN THEIR NOMINATED CLUB,
SCHOOL OR CHARITY \$5000!**

**PLUS! Any Ritchies Member who scans their
app or card will go into the draw to win
1 of 5 \$1,000 Ritchies Gift Cards!**

First drawn out wins their nominated organisation \$5,000.

Terms and conditions apply. Go to ritchies.com.au for full details. There is one \$5,000 Ritchies gift card for one lucky club, school or charity. There are 5 x \$1000 Ritchies gift cards to be won for registered Ritchies Card members who select a club, school or charity. Promotion starts 1/5/24 and ends 28/5/24. *Minimum spend of \$10 in one transaction and excluding cigarette & tobacco products, gift cards, electronic recharge and items marked reduced to clear.

JOIN TODAY!



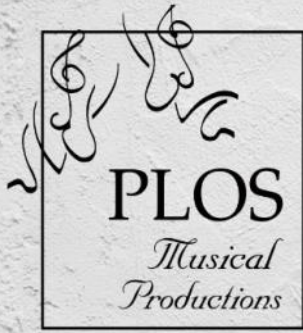
**RITCHIES
COMMUNITY
BENEFIT PROGRAM**



**MORE THAN
\$53 Million**
*Given back to the community
since 1993*

CELEBRATING 30 Years OF COMMUNITY BENEFITS





SCHOOL of ROCK

THE MUSICAL

JANUARY 2025

AUDITIONS

HORACE GREEN STUDENTS

All students must be aged between 10 and 15 years.



SEEKING



BASS, DRUM KIT, KEYS, GUITAR
& VOCALISTS



DETAILS AVAILABLE - FOLLOW LINK

www.plos.asn.au



BRINGING QUALITY THEATRE TO THE FRANKSTON STAGE



Supporting Children from Separated Families

Communities For Children Frankston Community Workshop Series is designed for local parents/carers, volunteers and staff working or living with children, who are seeking information and practical strategies.

Facilitated by Better Place Australia

Are you wanting help to reduce the impact of family separation on children's wellbeing?

This free, online workshop will provide information on:

- Supporting children through separation.
- Strategies to protect children from conflict.
- Co-parenting strategies.
- General tips to help and support families and children post separation.

This is based off Better Place Australia's Facilitating Childrens Wellbeing Post Separation Program and covers information and strategies to navigate separation.



DATE: Wednesday 5th June 2024

TIME: 6.15pm - 7.45pm

WHERE: Online event via Zoom webinar

SCAN TO REGISTER:



For questions contact Emma Rafferty at cfc_southern@anglicarevic.org.au



CFC is funded by the Australian Government, Department of Social Services. See www.dss.gov.au for more information.



MyTime
Frankston

Why MyTime?

MyTime is for parents and carers of a child with a disability, chronic medical condition or other additional needs including developmental delay.

Unwind and
share experiences
with others who
understand

FIND US AT:

BAM Studio 1

1 Rosella Street, Frankston

Mondays 9:45 am – 12 pm

CONTACT:

Sue Batcheler – Facilitator

suzanneb@mytimevic.com.au

0413 655 659



mytime.net.au