



Mt Eliza North PS  
IB World School



## Exhibition Information for Parents 2009

### What is the IBPYP Exhibition?

In the final year of the IB program, students participate in a culminating project known as the Exhibition. Students are required to engage in a collaborative, transdisciplinary inquiry process that involves them in identifying, investigating and offering solutions to real-life issues.

Through this inquiry they will also manage their time, research, proactively work with mentors, take appropriate actions, communicate their findings, assess their tasks and **CELEBRATE** their learning.



### Transdisciplinary Theme

#### HOW THE WORLD WORKS?

An inquiry into the natural world and its laws; the interaction between the natural world (physical and biological) and human societies; how humans use their understanding of scientific principles; the impact of scientific and technological advances on society and on the environment.

## The PYP exhibition has a number of key purposes:

- ❖ for students to engage in an in-depth, collaborative inquiry
- ❖ to provide students an opportunity to demonstrate independence and responsibility for their own learning
- ❖ to provide students with an opportunity to explore multiple perspectives
- ❖ for students to synthesise and apply learning of previous years and to reflect upon their journey through the PYP
- ❖ for students to design an authentic process for assessing their own work
- ❖ to demonstrate how students can take action as a result of their learning
- ❖ to unite the students, teachers, parents and other members of the school community in a collaborative experience that incorporates the essential elements of the PYP
- ❖ to celebrate the transition of learners in the primary to secondary education



# What are the major features of the program that should be evidenced throughout the exhibition?

**Learner Profile** – Becoming internationally minded means achieving application of the learner profile.

**We strive to be:**

inquirers, risk-takers, thinkers, knowledgeable, communicators, caring, open-minded, reflective, balanced and principled

**Key Concepts** – The key concepts should be shown through the use of key questions that guide student inquiry.

**The key concepts include:**

Form – What is it like?

Function – How does it work?

Causation – Why is it like it is?

Change – How is it changing?

Connection – How is it connected to other things?

Perspective – What are the points of view?

Responsibility – What is our responsibility?

Reflection – How do we know?

**Transdisciplinary Skills** – Within the search for conceptual understanding of a student's topic, it is important that the student develop appropriate skills in the construction of meaning.

**These skills include:**

Social Skills – accepting responsibility, respecting others, cooperation, resolving conflict, group decision making and adopting a variety of group roles

Communication Skills – listening, speaking, reading, writing and non-verbal communication

Thinking Skills – acquisition of knowledge, comprehension, application, synthesis, evaluation, dialectical thought and metacognition

Research Skills – formulating questions, observing, planning, collecting data, recording data, organizing data, interpreting data, presenting research findings

Self-Management Skills – gross motor skills, fine motor skills, spatial awareness, organization, time management, safety, healthy lifestyle, codes of behavior and informed choices

**Attitudes** – We develop internationally minded students by instilling in them a set of attitudes that will help them to become the traits of the learner profile.

**These attitudes are:**

Appreciation, commitment, confidence, cooperation, creativity, curiosity, empathy, enthusiasm, independence, integrity, respect and tolerance

**Action** – All students must complete an authentic and appropriate action project.

This may take place at school or away from school with supervision and parent permission. Students are encouraged to think of a variety of ways to take action!

# Important Dates



## JUNE

22-25<sup>th</sup> June

Introduce Exhibition  
View 2008 Exhibition Photos + DVD  
Introduce Transdisciplinary Theme  
Deconstruct Transdisciplinary Theme  
Students grouped according to issue  
Journals Started

## JULY

13<sup>th</sup> -17<sup>th</sup>

Write Central Idea  
Write Lines of Inquiry  
Write Inquiry Questions  
Parent Information 7.30 – 8.30 pm

16<sup>th</sup>

20<sup>th</sup> -24<sup>th</sup>

27<sup>th</sup> - 31<sup>st</sup>

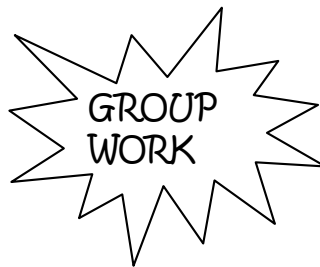
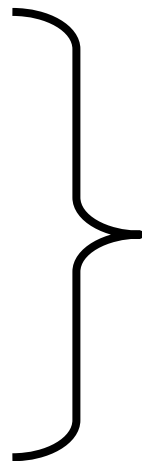
## AUGUST

3<sup>rd</sup> - 7<sup>th</sup>

10<sup>th</sup> - 14<sup>th</sup>

17<sup>th</sup> - 21<sup>st</sup>

24<sup>th</sup> - 28<sup>th</sup>



## SEPTEMBER

30<sup>th</sup> - 4<sup>th</sup>

4<sup>th</sup>

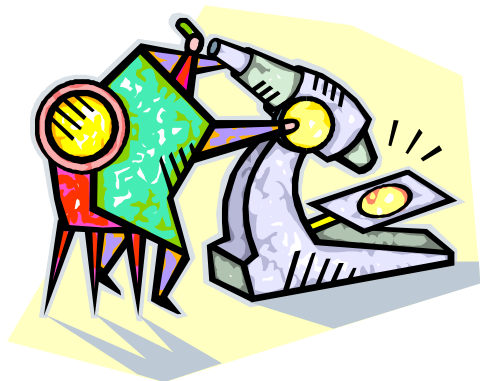
7<sup>th</sup>

Collect display stands from Derinya  
Set up display boards for the Exhibition  
Rehearsal of presentation to Grade 5  
Middle School walk - through  
Multiage walk - through  
EXHIBITION for the school 2.00 – 4.00pm  
for the community 6.30 – 8.30 pm  
Dismantle and return display stands to Derinya

# Role of parent/guardian

Parents/guardians will:

- ❖ have an understanding of the purpose and requirements of the exhibition
- ❖ support and encourage students and teachers throughout the process of inquiry
- ❖ be informed by reading newsletters, attending meetings, checking school websites, talking with students
- ❖ help students to access resources—people, places, media and information
- ❖ provide expert subject knowledge where applicable
- ❖ act as mentors as required or appropriate
- ❖ encourage independent inquiry and respect student ownership of the process
- ❖ have an opportunity to reflect on and give feedback on the exhibition
- ❖ Celebrate with the students by attending the staging of the exhibition



Thank you for taking the time to read this information pack! Your child's education is enriched because of the time and support you have given!

Julie, Sue, Kim and Lisa  
Grade 6 Teachers MENPS